



St Andrews Heights, Sutton in Ashfield, NG17

£1,095 PCM

One Month Rent Free, £250 Voucher & Deposit Free Option Available

This exceptional incentive lets you enjoy significant savings while settling into your dream home.

Location, Travel & Local Community

Discover the perfect blend of convenience and beauty at St Andrew's Heights, an exquisite new development featuring 2, 3, and 4-bedroom homes.

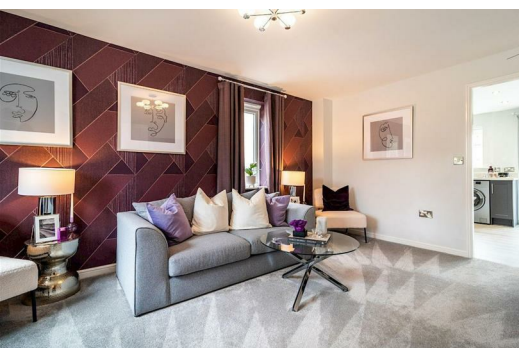
Nestled between the sought-after towns of Sutton-in-Ashfield and Mansfield, the location offers a tranquil setting surrounded by picturesque open fields.

Enjoy a range of amenities right on your doorstep or immerse yourself in the charm of the historic village of Skegby which is within walking distance.

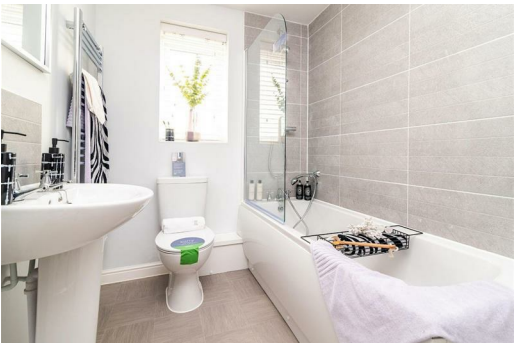
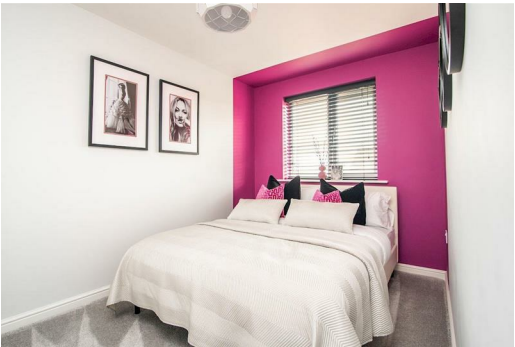
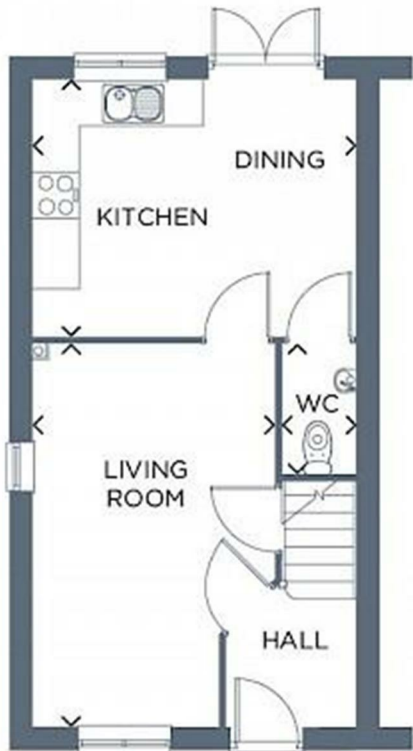
Education & SCHOOLS NEARBY

The area provides excellent opportunities for children aged 4-18, with a range of schools ranging from Kindergartens all the way up to Primary schools all within 1.5 miles of the site. Making the school run quick and easy.

About Your Home – THE LISBURN



3 Rosebay Road, Sutton in Ashfield, NG17 3LW



Energy Efficiency Rating			Environmental Impact (CO ₂) Rating		
Very energy efficient - lower running costs	Good	Poor	Very environmentally friendly - lower CO ₂ emissions	Good	Poor
92-100 A			100-120 A		
81-91 B			90-100 B		
69-80 C			80-90 C		
55-68 D			70-80 D		
49-54 E			60-70 E		
45-48 F			50-60 F		
39-44 G			40-50 G		
35-38			30-40		
Very energy efficient - higher running costs			Very environmentally friendly - higher CO ₂ emissions		